

GalvinSafe[®] Eye/Face Wash, Wall Mtd, Hand Act, Axion[®] MSR Head, S/S Bowl w/ Body Spray (HAWS)

PRODUCT CODE:

Galvin Engineering: 190.42.11.90

**HAWS: 7778B-A****HAWS: 8901B****PRE – INSTALLATION: 7778B-A**

LOCATION OF UNIT: The Model 7778B-A Eye/Face Wash should be installed in close proximity to potential accident areas. It should be clearly identified, free from obstructions and easy to access.

SUPPLY LINE: The minimum recommended line size is 1/2" BSP with 210 – 600 kPa flowing pressure. Where sediment or mineral content is a problem, an inlet filter is recommended.

PLUMBING CONNECTIONS: Inlet supply is female 1/2" BSPP. Waste outlet is male 1-1/4" BSPT.

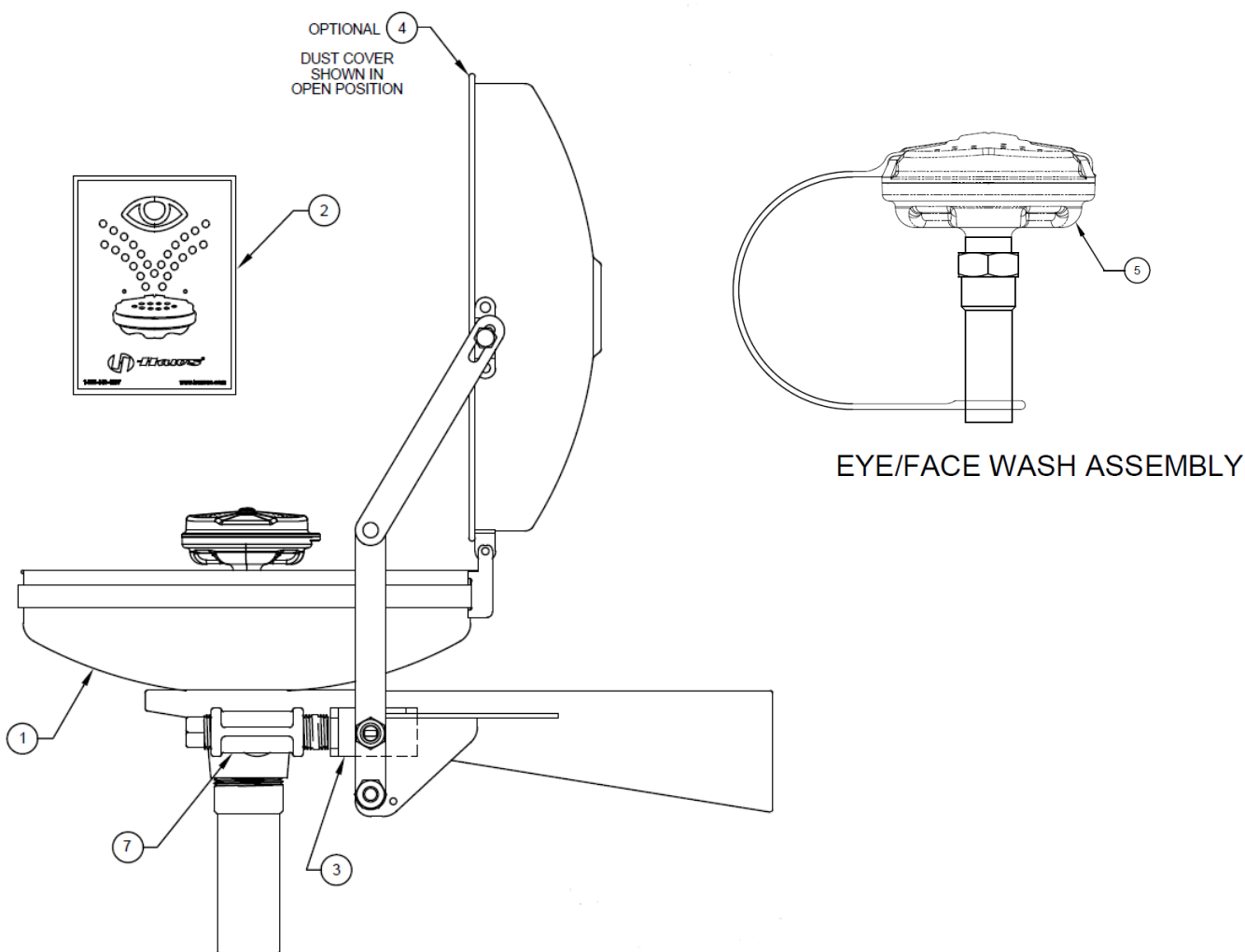
PRE – INSTALLATION: 8901B

LOCATION OF UNIT: The Model 190.43.55.32 (8901B) Hose Spray should be installed in close proximity to potential accident areas. It should be clearly identified, free from obstructions and easy to access.

SUPPLY LINE: The minimum recommended line size is 1/2" BSP with 210 – 600 kPa flowing pressure. Where sediment or mineral content is a problem, an inlet filter is recommended. A vacuum breaker is required to be used with this item. (Not supplied with the product or by Galvin Engineering)

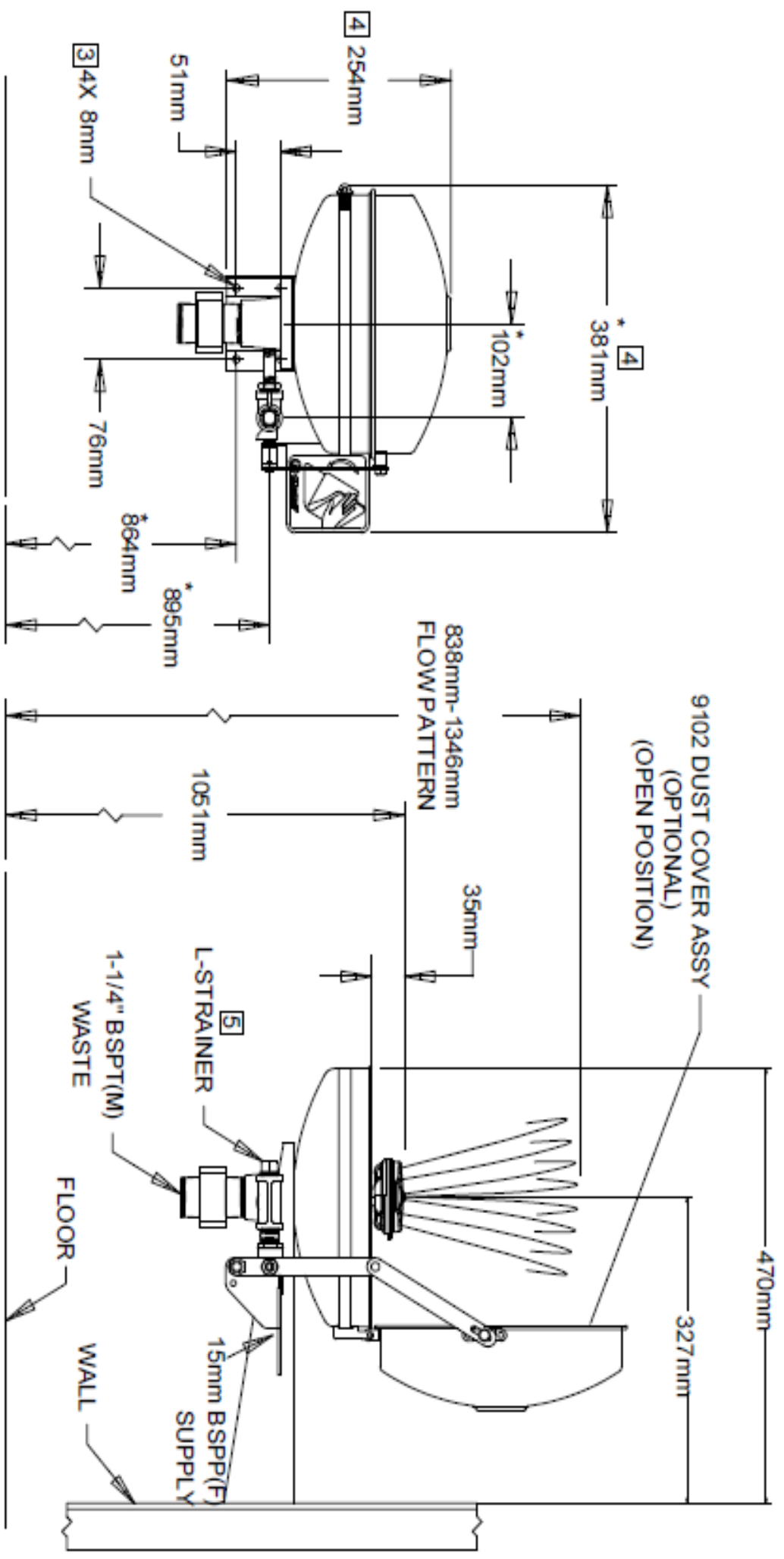
PLUMBING CONNECTIONS: Inlet supply is male 1/2" BSPT.

PARTS BREAKDOWN: 7778B-A



ITEM	ITEM CODE	ITEM DESCRIPTION
1	190.92.22.20	GALVINSAFE SS304 EYEWASH BOWL (HAWS)
2	190.91.12.32	EMERGENCY EYE WASH - 270X200
3	190.92.41.30	GALVINSAFE SS316 EYEWASH VALVE PLUS PUSH FLAG (HAWS)
4	-	DUST COVER ASSEMBLY* (OPTIONAL)
5	190.92.12.10	EYE/FACE WASH ASSEMBLY
6	190.91.80.33	TEST TAG
7	-	L-STRAINER*

* spare parts will require special order or may not be available (contact Galvin engineering for more details).



NOTES:

1. WHEN INSTALLING THIS UNIT, LOCAL, STATE, OR FEDERAL CODES SHOULD BE ADHERED TO FOR INSTALLATION DIMENSIONS (LOCATIONS), WASTE AND SUPPLY REQUIREMENTS OTHER THAN SHOWN.
2. TO COMPLY WITH AS 4775:
EYEWASH OR EYEFACE WASH SHALL BE POSITIONED SUCH THAT FLUSHING FLUID PATTERN IS NOT LESS THAN 838mm AND NO GREATER THAN 1346mm FROM SURFACE ON WHICH USER STANDS; AND 153mm MINIMUM FROM WALL OR NEAREST OBSTRUCTION.
3. MOUNTING HARDWARE SUPPLIED BY OTHERS.
4. DIM APPLIES WHEN OPTIONAL 9102 DUST COVER ASSEMBLY IS USED.
5. REMOVE 13mm NPT PLUG TO GAIN ACCESS TO STRAINER FOR CLEANING. WHEN RE-ASSEMBLING STRAINER AND PLUG, MAKE SURE THAT STRAINER IS FULLY PRESSED INTO PLUG CAVITY. PRIOR TO THREADING PLUG INTO TEE.
6. DIMENSIONS MAY VARY BY ±13 mm.

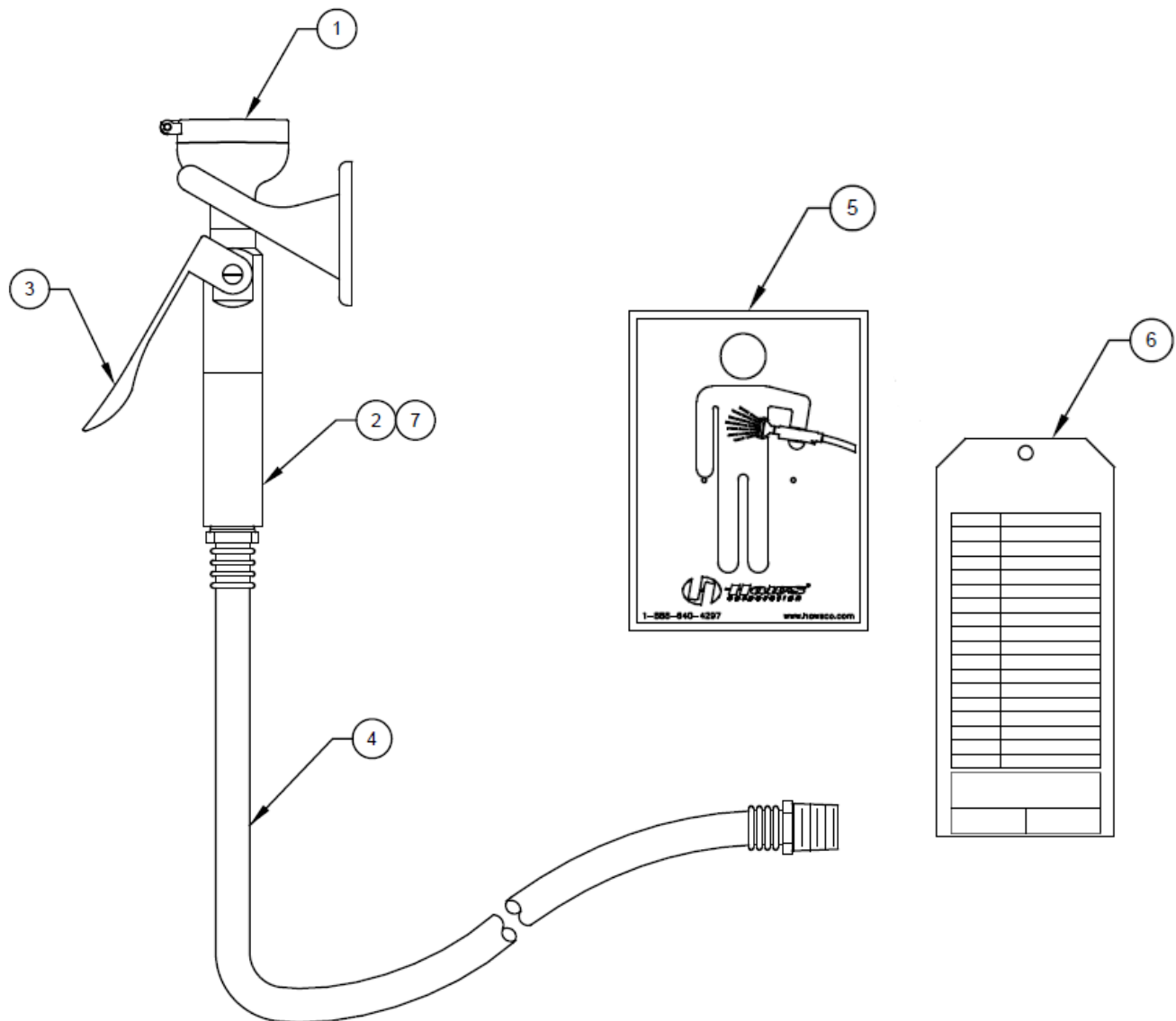
DISTRIBUTED BY:

GalvNEngineering
the mark of reliability
 470 VICTORIA RD WALA WA WA
 ASH TN 001 710302
 411 0 028 2244 FAX: +61 8 939 2340
 EMAIL: sales@galvnenengineering.com.au
 WEBSITE: www.galvnenengineering.com.au



TECH NO	REVISED BY	MODELS	190.42.11.12 (7778BA)	PART NUMBER	00102090103D
DRAWN	DATE	SCALE	GALVNSI/E EYEWASH, WALL, MTO.	REVISION	17
CHECKED	DATE	SCALE	HAND ACTIVATED AXION MSH HEAD & 8/8 STEEL BOWL (HAWSI)		
APPROVED	DATE	SCALE			
NO	DATE	SCALE			

PARTS BREAKDOWN: 8901B

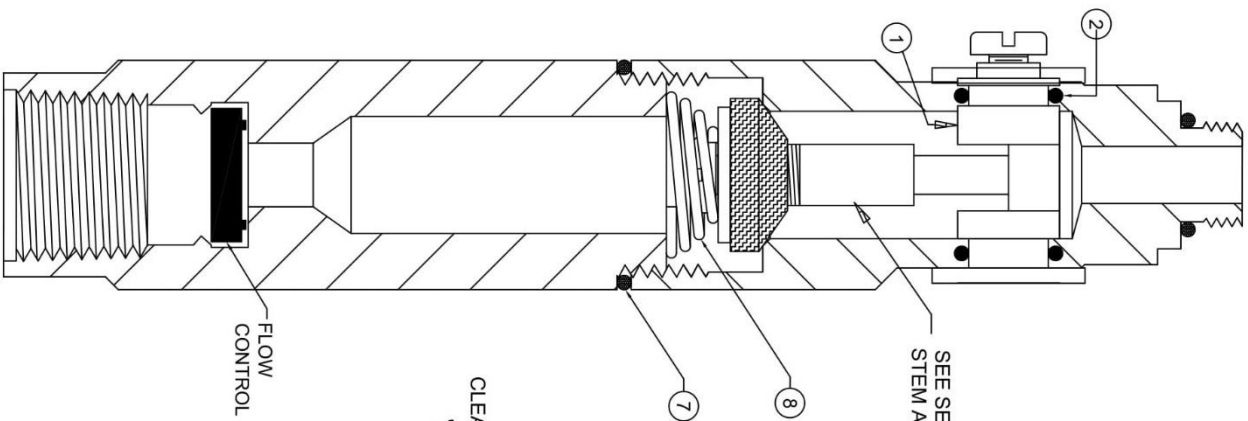


ITEM	ITEM CODE	ITEM DESCRIPTION
1	-	EYE/FACE WASH HEAD*
2	-	FLOW CONTROL*
3	190.92.50.00	VALVE ASSEMBLY
4	-	HOSE ASSEMBLY*
5	-	HOSE SPRAY SIGN*
6	190.91.80.33	TEST TAG
7	-	VRKSP248 VALVE REPAIR KIT*

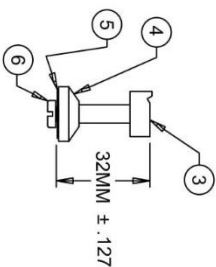
* spare part will require special order or may not be available (contact Galvin engineering for more details).

NOTES:

1. A VACUUM BREAKER IS REQUIRED TO BE USED WITH THIS ITEM. (NOT SUPPLIED WITH THE PRODUCT OR BY GALVIN ENGINEERING)



SEE SEAT & OPERATOR STEM ASSEMBLY DETAIL

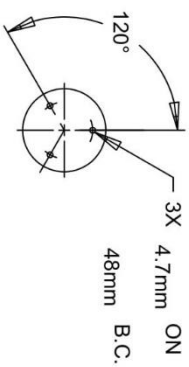


SEAT & OPERATOR STEM ASSEMBLY DETAIL

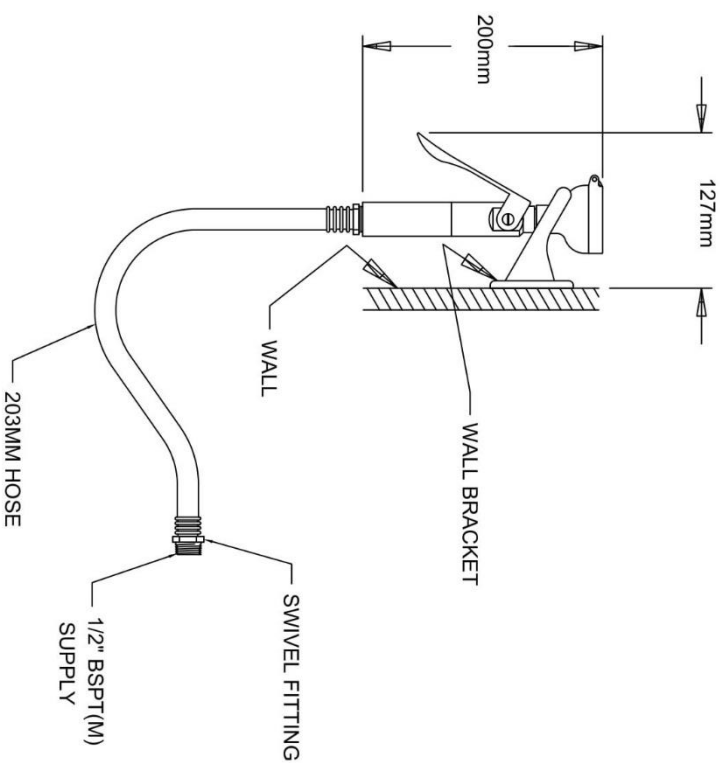
CLEAN VALVE SEAT AND WASHER THOROUGHLY, LUBRICATE 'O' RING WITH 'O' RING LUBE BEFORE REASSEMBLING.

ITEM NO.	QUANTITY	DESCRIPTION
①	1	CAM OPERATOR
②	2	'O' RING FOR CAM
③	1	OPERATOR STEM
④	1	SEAT WASHER
⑤	1	HOLDER WASHER
⑥	1	SCREW
⑦	1	'O' RING
⑧	1	SPRING

VALVE REPAIR DETAIL
MODEL VRK SP248
OPTIONAL



WALL BRACKET DETAIL



DISTRIBUTED BY:

GalvinEngineering
the mark of reliability

410 VICTORIA RD MALAGA WA
ABN/78 008 719 362
+61 8 9338 2344 FAX: +61 8 9338 2340
EMAIL: sales@galvinengineering.com.au
WEBSITE: www.galvinengineering.com.au



EGN NO/REVISED PER/:	MODEL(S)	PART NUMBER
EGN-5242 VMC	190 43 55 32 (8901B)	0002080191.D
DATE: CH/D:	GALVINSAFE BODY SPRAY, WALL MOUNTED,	REVISION
06/20/91 VMC	HAND HELD, 2.4MTR PRESSURE HOSE (HAWS)	9
APPROVED: DATE:	SCALE: NA	INSTALLATION
FV 11/23/17	DRAWING TYPE:	SIZE: A SHEET 1 OF 1

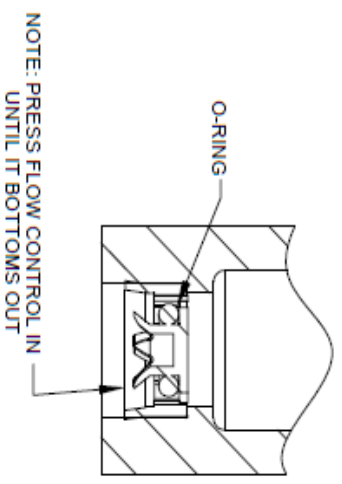
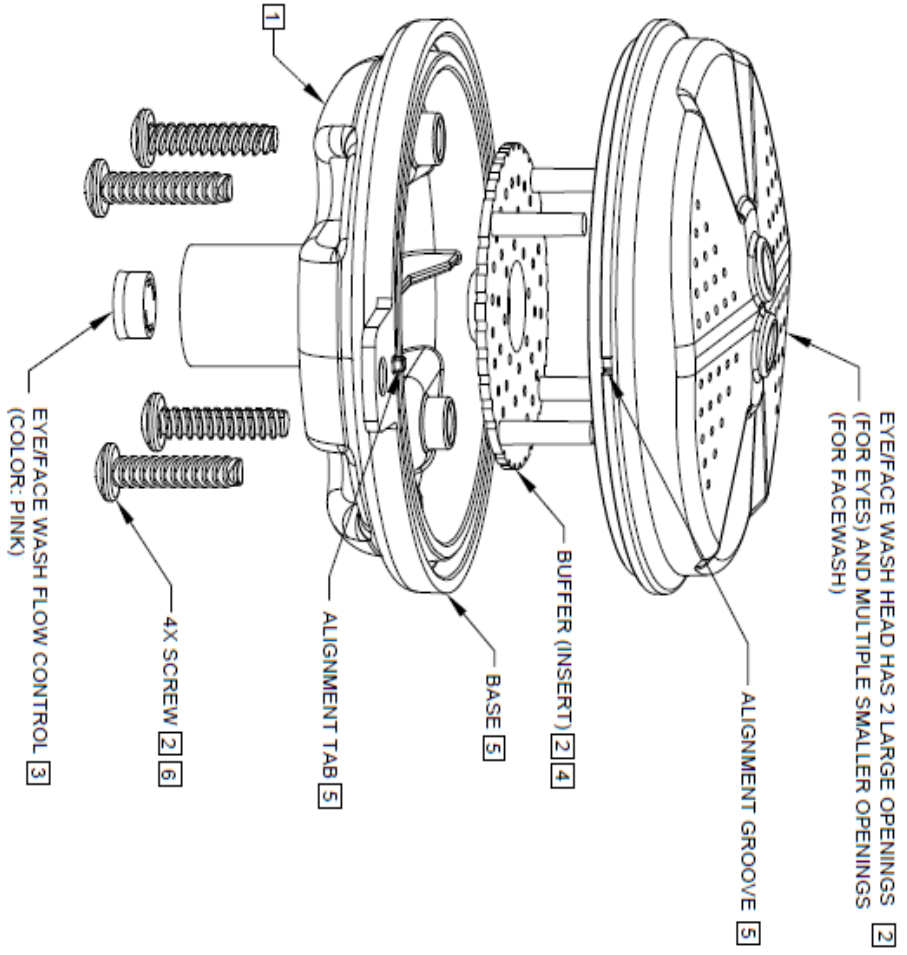
TROUBLESHOOTING: 7778-A	
PROBLEM	REPAIR CHECKLIST
1. No Flow.	1. Check the main shut-off valve.
2. Insufficient water flow	2. a. Verify minimum 210 kPa flowing supply line pressure b. Probable clogging of flow control due to inadequate line flushing. Unscrew eye/face wash head and remove the four screws to disassemble head. Clean flow control and reassemble Head. See next page Installation Drawings for details.
3. Eye/face wash streams do not meet desired eye level.	3. Possible blocked flow control, see above solution. Possible non-leveled eye/face wash assembly
4. Water does not drain properly.	4. Check the main waste line of your building to see if it does handle the capacity required for the entire drainage system.

TROUBLESHOOTING: 8901B	
PROBLEM	REPAIR CHECKLIST
1. No Flow.	1. Check the main shut-off valve.
2. Insufficient water flow	2. a. Verify minimum 210 kPa flowing supply line pressure b. Probable clogging of flow control due to inadequate line flushing Disassemble eyewash at inlet connection to gain access and clean rubber flow control. c. Unscrew eye/face wash head cap to gain access to the buffer and clean it.
3. Valve leaks in shut-off position.	3. Refer to installation drawing. Clean valve washer and seat thoroughly, then reassemble the valve.

For more information about GalvinSafe® (Haws) products, see our website

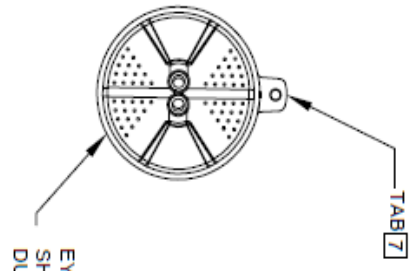
FLOW CONTROL CLEANING STEPS:

- 1 UNSCREW EYE/FACE WASH ASSEMBLY FROM ADAPTER (NOT SHOWN).
- 2 REMOVE SCREWS (QTY. 4) FROM SP85 EYE/FACE WASH ASSEMBLY. REMOVE EYE/FACE WASH HEAD AND BUFFER (INSERT).
- 3 REMOVE EXISTING FLOW CONTROL FROM BASE BY PUSHING IT OUT FROM THE TOP, AND CAREFULLY REMOVE ANY DEBRIS LODGED BETWEEN O-RING AND HOUSING OR OPENINGS. ALSO, CHECK FOR ANY SEDIMENT OR MINERAL DEPOSITS BLOCKING OPENINGS. EXERCISE CAUTION NOT TO DAMAGE OR LOSE O-RING IN THE PROCESS. ALL OPENINGS ON FLOW CONTROL MUST BE FREE AND CLEAR OF ANY OBSTRUCTIONS FOR FLOW CONTROL TO FUNCTION PROPERLY. REINSTALL FLOW CONTROL. SEE DETAIL A FOR ORIENTATION.
- 4 INSERT BUFFER (INSERT) INTO EYE/FACE WASH HEAD NOTING ORIENTATION OF POST IN RELATIONSHIP TO ALIGNMENT GROOVE AS SHOWN ON DETAIL B.
- 5 REASSEMBLE EYE/FACE WASH HEAD. MAKING SURE THAT ALIGNMENT GROOVE ON EYE/FACE WASH HEAD LINES UP WITH ALIGNMENT TAB ON BASE.
- 6 REINSTALL SCREWS (QTY. 4) INTO THE EYE/FACE WASH ASSEMBLY. TIGHTEN SNUG TO ENSURE A WATERTIGHT SEAL. DO NOT OVER-TIGHTEN. TORQUE SPEC: 4 IN. LBS. MAX
- 7 REASSEMBLE 190.92.12.10 EYE/FACE WASH ASSEMBLY ONTO ADAPTER (NOT SHOWN). ORIENT TAB TOWARDS THE BACK (AWAY FROM USER). DO NOT OVER-TIGHTEN.
- 8 PLACE DUST COVER (NOT SHOWN) ONTO EYE/FACE WASH.

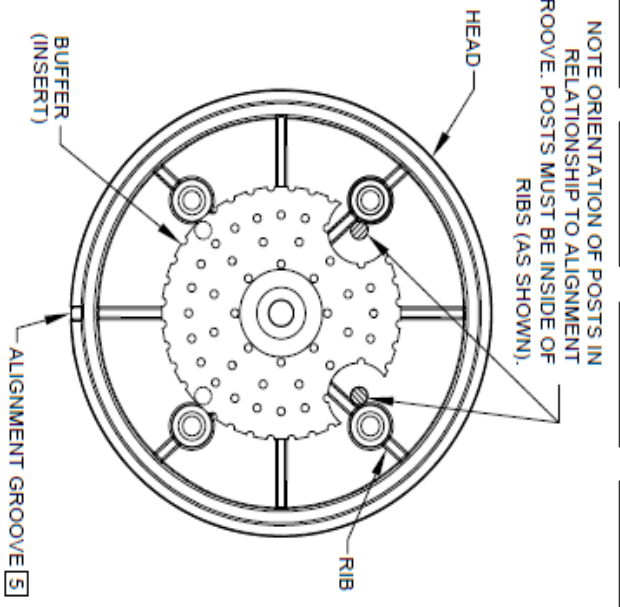


3 DETAIL A

FLOW CONTROL SHOWN IN PLACE



EYE/FACE WASH SHOWN WITHOUT DUST COVER 8



4 DETAIL B

SEE SHEET 1 OF 2 FOR INSTALLATION/RETROFIT STEPS

DISTRIBUTED BY:
GalvinEngineering
the mark of reliability

410 VICTORIA RD MALAGA WA
 AUSTRALIA
 TEL: 8 9338 2344 FAX: 41 8 9338 2340
 WEBSITE: www.galvinengineering.com.au

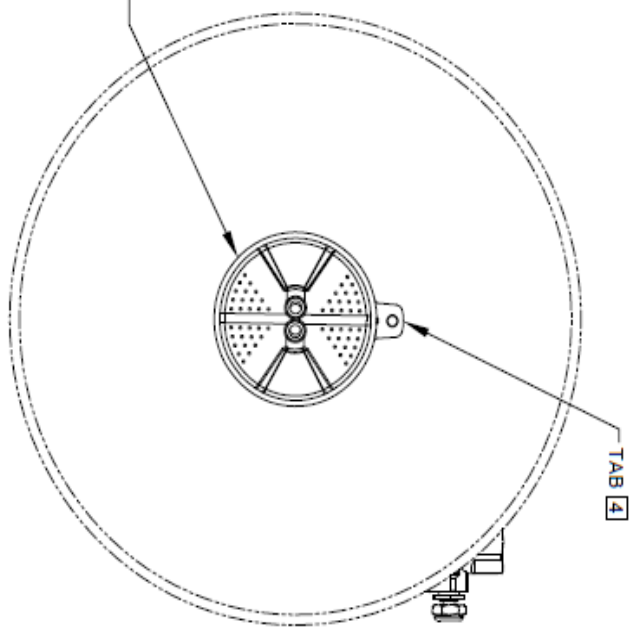
©2013 Haws Corporation - All Rights Reserved. HAWS® and other trademarks used in these materials are the exclusive property of Haws Corporation.

		MODEL(S) 190.92.12.10 (SP65) GALVINSAFE AXION MSR EYE/FACE WASH HEAD (HAWS)		PART NUMBER 0002077031	
ENGINEER/DESIGNER A103 DATE APPROVED:	CHKD DATE DATE	SCALE 1:1	DRAWING TYPE INSTALLATION	SHEET 2	OF 2

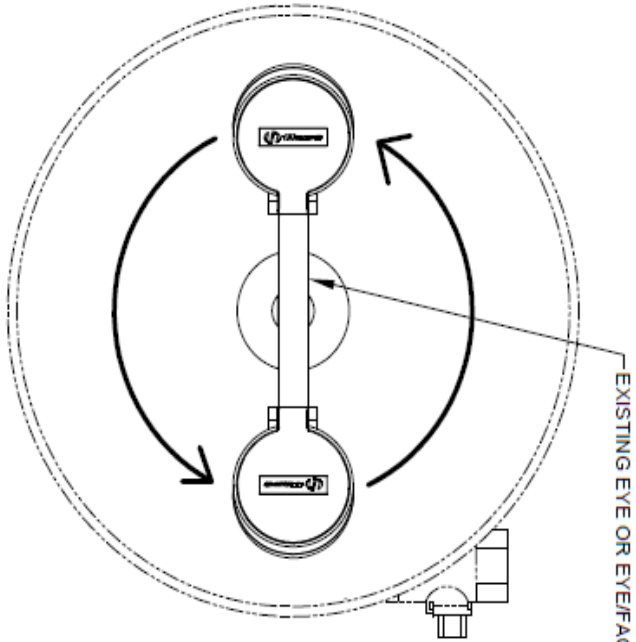
INSTALLATION/ RETRO FIT STEPS

1. IF REPLACING AN EXISTING EYEWASH ASSEMBLY WITH SP65 FOLLOW STEPS 2 THROUGH 5 AND IF INSTALLING SP65 ON NEW UNIT FOLLOW STEPS 3 THROUGH 5 (IF APPLICABLE).
NOTE: NOT FOR USE ON ANY FREEZE RESISTANT UNIT; i.e. 8300FP, 8300.156, 7433FP, 8317CTFP, 8317CTFP.220V, AND 8317CTFPC1D1.
2. REMOVE EXISTING EYEWASH BY SPINNING EYEWASH TEE COUNTER CLOCKWISE.
DO NOT REMOVE BRASS NIPPLE FROM BOWL HOLDER.
3. PLACE SP65 ADAPTER THROUGH DUST COVER LOOP. THREAD SP65 ADAPTER ONTO BRASS NIPPLE UNTIL SNUG AGAINST STRAINER.
4. THREAD SP65 ONTO ADAPTER. ORIENT TAB TOWARDS THE BACK (AWAY FROM USER). DO NOT OVER-TIGHTEN.
5. PLACE DUST COVER ONTO EYEFACE WASH
6. EXISTING COMPONENTS SHOWN (TYPICAL MODEL) ARE FOR REFERENCE ONLY AND MAY NOT REPRESENT YOUR SPECIFIC UNIT.
7. ADAPTER SUPPLIED WITH SP65 MAY NOT BE REQUIRED IN SOME APPLICATIONS.

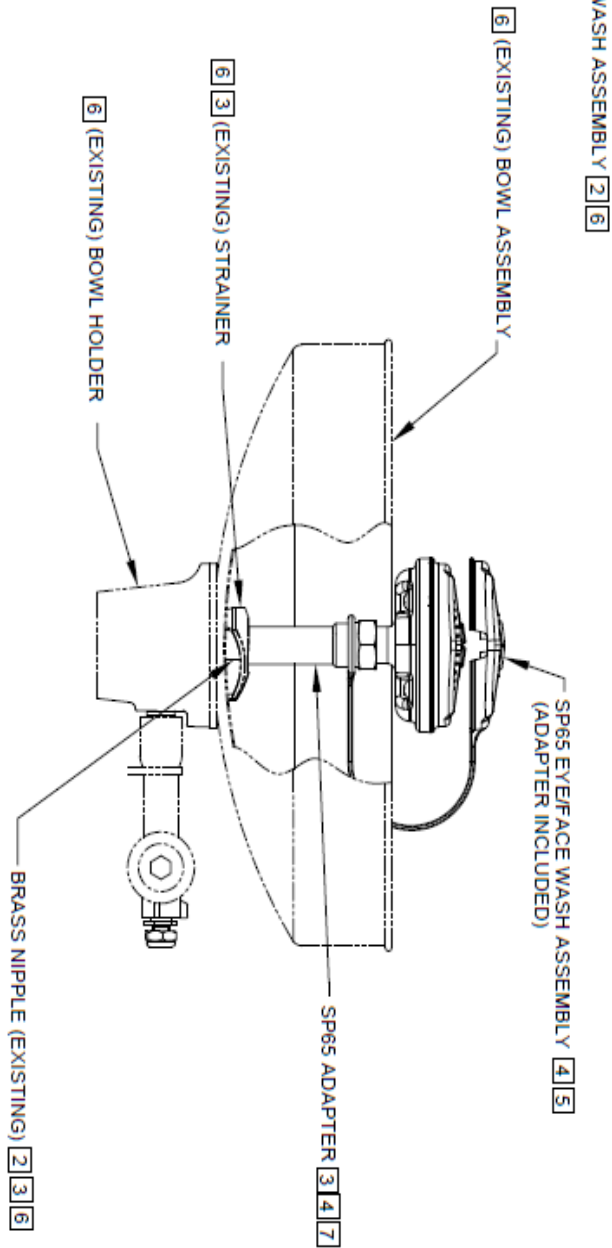
EYEFACE WASH HEAD SHOWN WITHOUT DUST COVER



TAB [4]



EXISTING EYE OR EYEFACE WASH ASSEMBLY [2] [6]



SP65 EYEFACE WASH ASSEMBLY [4] [5]
(ADAPTER INCLUDED)

[6] (EXISTING) BOWL ASSEMBLY

[6] [3] (EXISTING) STRAINER

[6] (EXISTING) BOWL HOLDER

SP65 ADAPTER [3] [4] [7]

BRASS NIPPLE (EXISTING) [2] [3] [6]

SEE SHEET 2 OF 2
FOR FLOW CONTROL
CLEANING STEPS



ENGINEER/REVIEWED PERIOD: 4/10/08 ECN: 4838 HAW		MODEL(S) 190.92.12.10 (SP65) GALVINSAFE AXION MSR EYEFACE WASH HEAD (HAW)		PART NUMBER 0002077031	
DRAWING DATE: 1/ROBERTS APPROVED:	DATE: 1/ROBERTS DATE:	DATE: 1/ROBERTS DATE:	DATE: 1/ROBERTS DATE:	SCALE: 1:18	DRAWING TYPE: INSTALLATION
SIZE: A			SHEET: 1 OF 2		

DISTRIBUTED BY:
GalvinEngineering
the mark of reliability
 410 VICTORIA RD MULLA W.A.
 A/N: 78 008 719 382
 F/N: 8 9338 2344 FAX: +61 8 9338 2340
 EMAIL: sales@galvinengineering.com.au
 WEBSITE: www.galvinengineering.com.au

WARRANTY

The warranty set forth herein is given expressly and is the only warranty given by the Galvin Engineering Pty Ltd. With respect to the product, Galvin Engineering Pty Ltd makes no other warranties, express or implied. Galvin Engineering Pty. Ltd. hereby specifically disclaims all other warranties, express or implied, including but not limited to the implied warranties of merchantability and fitness for a particular purpose.

Galvin Engineering Pty Ltd products are covered under our manufacturer's warranty available for download from www.galvinengineering.com.au Galvin Engineering Pty Ltd expressly warrants that the product is free from operational defects in workmanship and materials for the warranty period as shown on the schedule in the manufacturer's warranty. During the warranty period, Galvin Engineering will replace or repair any defective products manufactured by Galvin Engineering without charge, so long as the terms of the Manufacturer's warranty are complied with.

The remedy described in the first paragraph of this warranty shall constitute the sole and exclusive remedy for breach of warranty, and Galvin Engineering Pty Ltd shall not be responsible for any incidental, special or consequential damages, including without limitation, lost profits or the cost of repairing or replacing other property which is damaged if this product does not work properly, other costs resulting from labour charges, delays, vandalism, negligence, fouling caused by foreign material, damage from adverse water conditions, chemical, electrical or any other circumstances over which Galvin Engineering has no control. This warranty shall be invalidated by any abuse, misuse, misapplication, improper installation or improper maintenance or alteration of the product.

Within Australia: 1300 514 074 Outside Australia: P: +61 (0)8 9338 2344

F: +61 (0)8 9338 2340

sales@galvinengineering.com.au

www.galvinengineering.com.au

ABN: 78 008 719 382

PERTH | SYDNEY | MELBOURNE | BRISBANE | ADELAIDE

